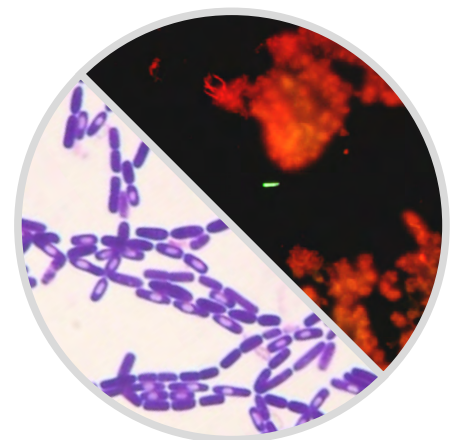
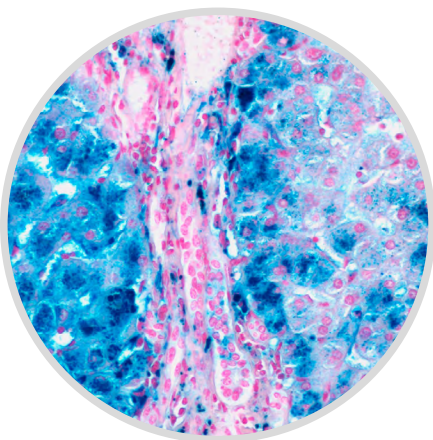




Microscopy & Diagnostic Staining

Microscopes, Microscope Accessories,
Staining and Reagents.



Contents

Stains & Staining Reagents	3
Haematology.....	3
Bacteriology.....	5
Parasitology.....	9
Mycology.....	10
Histology.....	11
Cytology.....	13
Staining Accessories.....	15
Staining Automation.....	16
Stain Control Slides.....	19
Pre-Prepared Slides.....	21
pH Indicators.....	23
 Microscopes & Accessories	25
Biological Microscopes.....	25
Polarised Microscopes.....	29
Digital LCD Microscopes.....	30
Motorised Microscopes.....	32
Inverted Microscopes.....	33
Fluorescent Microscopes.....	35
Stereo Microscopes.....	38
Digital Microscope Eyepieces.....	40
Digital Microscope Eyepieces & Screens.....	42
Accessories & Attachments.....	43
Microscope Objectives.....	45
Microscope Maintenance & Cleaning.....	46
Microscope Consumables & Other Products.....	47



Microscopy & Staining

Product Catalogue

Microscopes, Microscope Accessories,
Staining and Reagents.

Cosmos Biomedical Ltd. is a leading supplier of premium diagnostic products and training materials to health and research institutions in the UK and worldwide.

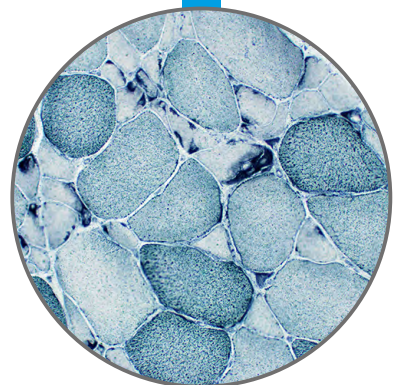
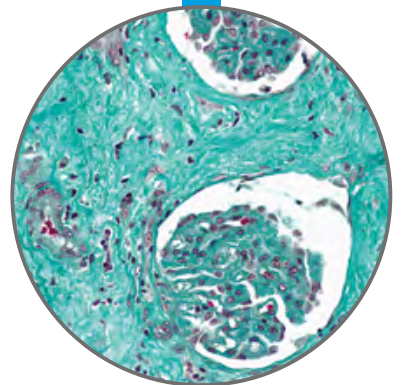
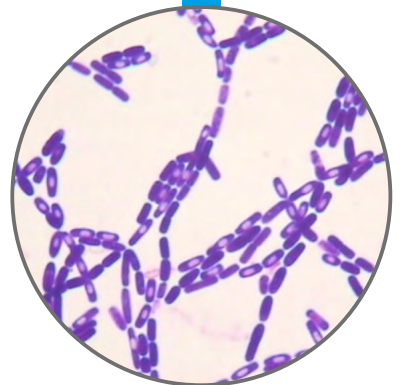
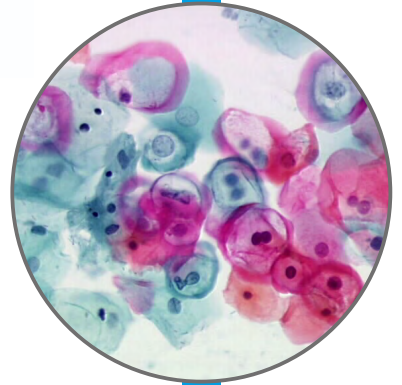
We stock products ranging from simple test reagents to laboratory analysers and provide a unique education series for CPD in all medical and pathology disciplines.

In this catalogue we have collected our premium quality stains, staining reagents, staining equipment and automation, and our large range of exclusive laboratory microscopes and related accessories for all your needs.

We also provide an extensive range of consumable products including vacuum blood tubes, specimen containers, tips, swabs, cuvettes, pipettes and extensive racking systems.

Cosmos Biomedical prides itself on great customer service, top quality, reliable and affordable products, and detailed knowledge of the scientific and medical fields enabling us to support you with your work.

Cosmos Biomedical... Universal Excellence





Stains & Staining Reagents

We stock a wide range of high quality diagnostic stains and reagents for all pathology disciplines including easy-to-use CE marked kits with full instructions. This catalogue contains a range from our full list. If there is something you require but cannot see, including powdered stains, please contact us and we will be happy to assist you. Many of our stains are available from stock for next day delivery.

Haematology Staining

May-Grünwald Giemsa

Product	Product Code	Product Sizes
May Grünwald Solution	CB320070	125, 500, 1000, 2500ml
Giemsa R Solution	CB320310	20, 125, 500, 1000, 2500ml
Giemsa L Solution	CB320300	125, 1000ml
pH 7.0 Buffer Solution	CB330370	1000, 5000ml
pH 6.8 Buffer Solution	CB330368	1000, 5000ml
pH 7.2 Buffer Solution	CB330372	1000, 5000ml
pH 7.0 Buffer Powder	CB361600	6 doses for 6 x 1 litre
pH 6.8 Buffer Powder	CB363568	6 doses for 6 x 1 litre
pH 7.2 Buffer Powder	CB363572	6 doses for 6 x 1 litre

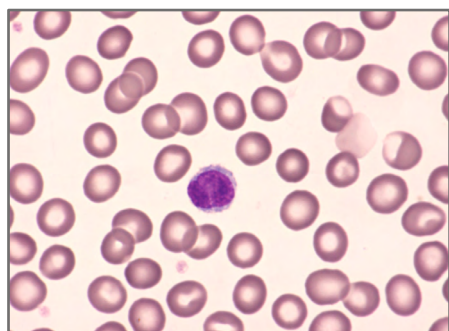
Giemsa R is a fast-stain, reacting in 10 minutes. It is used for dry smears and thick blood smears.

Giemsa L is a slow stain, reacting in 20 minutes. It is used for wet smears and tissue sections.

Buffers ensure good quality staining and reproducibility of results. Buffers should be used instead of tap water.

Fast Acting May-Grünwald Giemsa

Product	Product Code	Product Sizes
Kit RAL 555	CB361550	1 kit (3 x 100ml) tests 100-200 slides
FIX-RAL 555	CB362870	100, 1000, 2500ml
EOSIN-RAL 555	CB320300	100, 1000, 2500ml
BLUE-RAL 555	CB330370	100, 1000, 2500ml



Quick Staining in only 15 seconds. Ready to use, no dilution, wide necked bottles. Limited oxidation and evaporation risks, no transfer necessary.

Other uses of Kit RAL: 555: Cytology of urines, biological liquids, cytopunctures and CRL, cytology of fixed and paraffined tissue sections, tissue protozoa, fungi contributing to deep mycosis, veterinary parasitology, etc.

Image: RAL 555 Kit staining



Wright Staining

Product	Product Code	Product Sizes
Wright Solution	CB320400	20, 125, 1000, 2500ml

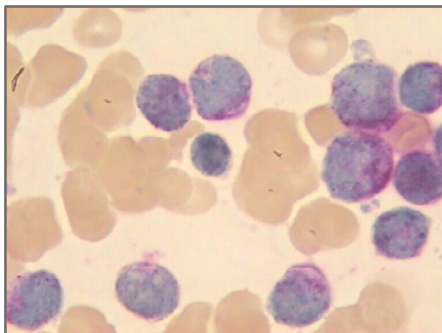
Perls Staining for the Detection of Haemosiderin

Product	Product Code	Product Sizes
Kit HemaPerls	CB361850	1 kit (50 slides)
<i>Kit Components</i>		
Mayer Haematoxylin		1 x 100ml
Acid Buffer and Potassium Ferrocyanide		10 x 5ml

In an acid environment, ferric ions react with potassium ferrocyanide leading to a precipitate called Ferric Ferrocyanide (Prussian Blue). It shows the presence of the pathological pigment Haemosiderin.

Myeloperoxidase with Alphanaphtol-Pyronin

Product	Product Code	Product Sizes
Kit Myeloperoxidase	CB361610	1 kit (30 slides)
<i>Kit Components</i>		
Alphanaphtol Solution		1 x 30ml
Formalin/Ethanol Solution		1 x 125ml
Mayer Haematoxylin		1 x 125ml
Pyronin, 0.2% in aqueous solution		1 x 125ml
Hydrogen Peroxide		1 x 10ml



Peroxidase granulations form an insoluble bright red compound with pyronin in presence of Alphanaphtol and Hydrogen Peroxide. The nuclei of leukocytes stain blue with Mayer Haematoxylin. This kit is benzidine free.

Image: Kit Myeloperoxidase staining

Detection of Glucids & Reticulocyte Counting

Product	Product Code	Product Sizes
Mayer Haemalum	CB320550	1000, 2500ml
Schiff Reagent	CB3200680	250, 500, 1000ml
Brilliant Cresyl Blue Solution	CB310750	125ml



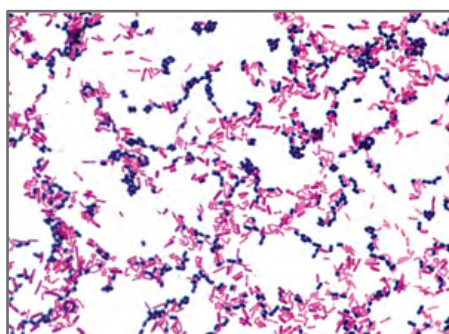
Bacteriology Staining

Gram Nicolle

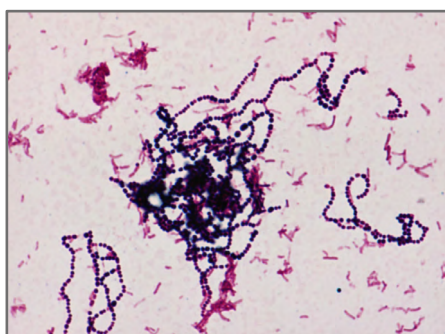
Product	Product Code	Product Sizes
Kit Gram-Nicolle	CB364320	1 kit (4 x 240ml)
Carbolic Gentian Violet *	CB320960	125, 1000, 2500ml
Lugol, PVP-Stabilised Solution *	CB367400	240, 1000, 2500ml
Lugol Solution	CB367300	240, 1000, 2500ml
Fast Differentiator (alcohol/acetone) *	CB361510	240, 1000, 2500ml
Slow Differentiator (alcohol based)	CB363030	240, 1000, 2500ml
Ziehl Carbolic Fuchsin	CB320490	125, 500, 1000, 2500ml
Ziehl Carbolic Fuchsin 1/10 *	CB364540	240, 1000, 2500ml

Gram Nicolle Staining is a differential staining based on the structure of the bacterial cell wall which is different for Gram-positive and Gram-negative bacteria.

* Products included in the Kit Gram-Nicolle. Kit Gram-Nicolle: performs 230-300 slides, length of test: 3 minutes.



Gram Nicolle Kit Staining



Gram Nicolle Kit Staining



Gram Nicolle Staining - *Bacillus cereus*

Gram Hucker

Product	Product Code	Product Sizes
Kit Gram-Hücker R (fast action)	CB361520	1 kit (4 x 240ml)
Kit Gram-Hücker L (slow action)	CB362860	1 kit (4 x 240ml)
Crystal Violet Oxalate *	CB361490	240, 1000, 2500ml
Lugol, PVP-Stabilised Solution *	CB367400	240, 1000, 2500ml
Lugol Solution	CB367300	240, 1000, 2500ml
Fast Differentiator (alcohol/acetone)	CB361510	240, 1000, 2500ml
Slow Differentiator (alcohol based)	CB363030	240, 1000, 2500ml
Safranin *	CB361500	240, 1000, 2500ml

**Double
Filtered
Reagent****

Gram Hucker staining is based on the same principle as the Gram Nicolle technique. The structure of the bacterial walls and their permeability to alcohol help differentiate the Gram-positive bacteria from the Gram-negative bacteria. In this technique, Carbolic Gentian Violet is replaced by our unique Crystal Violet Oxalate (which does not require filtration) and Ziehl Carbolic Fuchsin by Safranin.

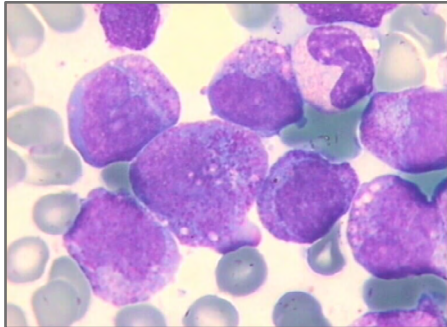
* Products included in Kit-Gram Hücker variations. Kit Gram-Hücker: performs 230-300 slides, length of test: 3 minutes.

** Crystal Violet Oxalate reagent comes double filtered to ensure no deposits.



Fast Acting May-Grünwald Giemsa

Product	Product Code	Product Sizes
Kit RAL 555	CB361550	1 kit (3 x 100ml)
FIX-RAL 555	CB362870	100, 1000, 2500ml
EOSIN-RAL 555	CB361640	100, 1000, 2500ml
BLUE-RAL 555	CB361650	100, 1000, 2500ml



A fast acting variation of May-Grünwald Giemsa staining for cytology of urines, spinal and other fluids.

Kit RAL 555, number of tests possible: 100-200 slides.

Image: May Grunwald-Giemsa RAL 555 Staining

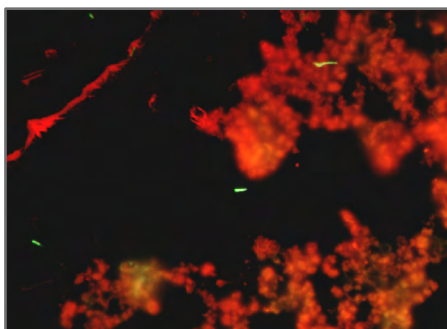
Fluorescent Staining

Product	Product Code	Product Sizes
Kit Fluo-RAL	CB359000	1 kit (2 x 250ml, 4 x 125ml)
Fixative Fluo-RAL	CB362115	1000ml
Auramine Fluo-RAL	CB362325	500ml
Carbolic Solution for Auramine Fluo-RAL	CB362530	500ml
Degommier Discolouring Solution Fluo-RAL	CB362210	1000ml
Thiazine Red Fluo-RAL	CB362780	500ml
Carbolic Solution for Thiazine Red Fluo-RAL	CB362610	500ml
Auramine Staining Kit RAL	CB359500	1 kit (3 x 1000ml)
Carbolic Auramine	CB361430	1000ml
Discolouring Solution	CB362215	1000ml
Methylene Blue	CB365340	1000ml

Fluo-RAL kit offers a rapid method for the identification of mycobacteria or Acid Fast Bacilli (AFB).

AFB retain the Auramine after discolouration with acid and alcohol. The other non-acid-fast bacteria and cell elements are counter stained by Thiazine Red. Subsequently, mycobacteria appear yellow-green on a red background. In case of any suspicion, it is required to confirm results with traditional ZN staining.

Kit Fluo-RAL - number of tests possible: 150-200 slides.



Kit Fluo-RAL Staining - MTB



Fluo-RAL Staining Kit - CB359000

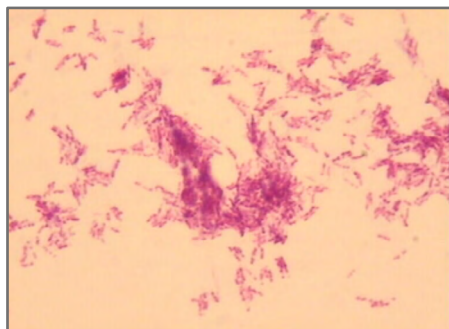


Staining

Bacteriology Staining

Hot Ziehl-Neelsen (ZN)

Product	Product Code	Product Sizes
RAL ZN Staining Kit	CB365400	1 kit (3 x 1000ml)
ZN Carbolic Fuchsin	- included in kit	1000ml
ZN Acid-Alcohol 3%	- included in kit	1000ml
ZN Methylene Blue 0.3%	- included in kit	1000ml
Ziehl Carbolic Fuchsin	CB362210	125, 500, 1000, 2500ml
Carbolic Methylene Blue	CB362780	125, 1000, 2500ml



RAL ZN Staining Kit allows Ziehl-Neelsen staining, as recommended by the WHO and IUATLD. Ready to use, it allows a reliable and reproducible diagnosis in 15 minutes. The acid-fast bacilli appear pink against the blue background of the preparation.

Image: Gordoniae stained by RAL ZN Kit - CB365400

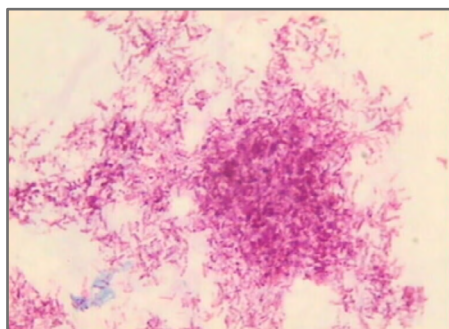
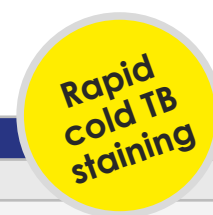
Ziehl-Armand

Product	Product Code	Product Sizes
Kit BK-Color	CB364600	1 kit (2 x 100ml)
Ziehl Carbolic Fuchsin	CB320490	125, 500, 1000, 2500ml
Armand Solution	CB360100	1000ml

Using Armand solution enables both discolouration of all bacteria (except for mycobacteria) and colouration of the preparation background at the same time. Kit BK-Color number of tests: 125-200 slides.

Fast Cold Staining

Product	Product Code	Product Sizes
Kit Quick TB	CB361560	1 kit
Armand Solution	CB360100	125, 1000ml
Carbolic Fuchsin	CB365240	1000ml



Using this kit prevents heating slides and breathing carbolic toxic fumes. This staining is quick and usable on all types of substrates (expectorates, cultures, etc.). Kit Quick TB, number of tests: 125-200 slides.

Image: Tuberculosis stained by RAL Kit Quick TB - CB361560



Other Bacteriology Staining

Product	Product Code	Product Sizes
UriStain - Urine Sediment Stain	CBZ74	15ml
Methylene Blue Stain	CBZ88	15ml
Flagella Stain - for Bacterial Flagella staining	CBZ87	15ml
Brilliant Green Counterstain	CBBG008	250ml
AFB Brilliant Green Counterstain	CB483KB	225ml x 3 (675ml)w

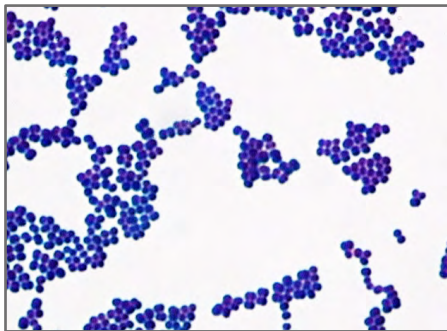


Image: Methylene Blue Staining





Parasitology Staining

Parasitic Coprology

Product	Product Code	Product Sizes
Kit Copro-Duo 2 x 12	CB362400	1 kit (2 x 12)
Kit Copro-Duo 2 x 24	CB362350	1 kit (2 x 24)
Organic Phase Ethyl Acetate Base	Included in kit	1 x 200ml or 1 x 400ml
Lugol, Concentrated Solution	Included in kit	1 x 3ml or 2 x 3ml
Aceto-Acetic Buffer pH 5.0 (Bailenger)	Included in kit	1 x 200ml or 1 x 400ml
Spatula	Included in kit	24 or 48
Individual single-use tube racks	Included in kit	12 or 24
30ml Sedimentation tubes	Included in kit	24 or 48
10ml Sedimentation tubes	Included in kit	24 or 48
Kit MIF-Color	CB361410	1 kit
Merthiolate-Formalin (M.F Solution)	Included in kit	2 x 125ml
Lugol Concentrated Solution	Included in kit	1 x 20ml



Kit Copro-Duo, a complete kit in Parasitic Coprology.

Two Concentration techniques: MIF and Bailenger.

Kit MIF-Color: One simple technique for concentrating, staining and preserving parasitic elements.

Number of tests: 50-100 slides.

Image: Kit Copro-duo staining

Quick Staining for Tissue and Blood Parasites

Product	Product Code	Product Sizes
Kit RAL 555	CB361550	1 kit (3 x 100ml)
FIX-RAL 555	CB362870	100, 1000, 2500ml (for use in Kit RAL 555)
EOSIN-RAL 555	CB361640	100, 1000, 2500ml (for use in Kit RAL 555)
BLUE-RAL 555	CB361650	100, 1000, 2500ml (for use in Kit RAL 555)
Giemsa R Solution	Included in kit	125, 500, 1000, 2500ml
Giemsa L Solution	Included in kit	125, 1000ml
pH 7.0 Buffer Powder	Included in kit	6 doses for 6 x 1000ml

Kit RAL 555 is a fast acting variation of the May-Grünwald Giemsa technique for staining of *Plasmodium*, *Trichomonas*, *Microfilaria*, Tissue Protozoa, (*Leishmania*, *Toxoplasma*, *Microsporidia*), *Cryptosporidium*, *Pneumocystis carinii*, Fungi contributing to deep mycosis and for veterinary parasitology (Piroplasms, *M. pachydermatis*)



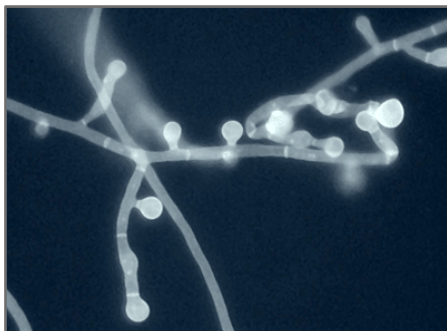
Mycology Staining

Mycology Stains & Reagents

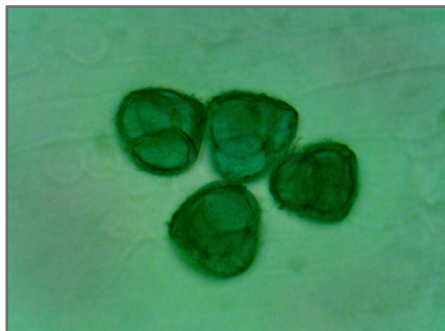
Product	Product Code	Product Sizes
Lactophenol Blue	CB363060	125ml
Ziehl Fuchsin	CB320490	125, 500, 1000, 2500ml
Malachite Oxalate Green	CB317880	20ml, 236ml, 100g
Calcofluor White	CBSC15-(20,100,250)	20ml, 100ml, 250ml
BlueMount - Lactophenol/PVA fungal stain-mount*	CBZ137	15ml
Giemsa Stain R in solution	320310	125, 500, 1000, 2500 ml
Giemsa Stain L in solution	320300	125, 1000 ml
Light Green SF Yellowish	320770	25g
KOH Potassium Hydroxide 10%	CBZ77	15ml
KOH Potassium Hydroxide 20%	CBZ78	15ml

Using Lactophenol Blue allows simultaneous clarification of the preparation (due to Lactophenol) and the staining fungal elements blue.

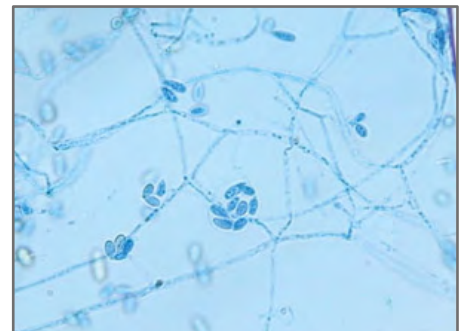
*BlueMount is a formulation of lactophenol cotton blue with polyvinyl alcohol. Recommended for staining and preparing permanent, long-lasting mounts of fungal slides.



Calcofluor white staining



Malachite Oxalate Green staining



Lactophenol Blue staining



Histology Staining

Bichromic Staining

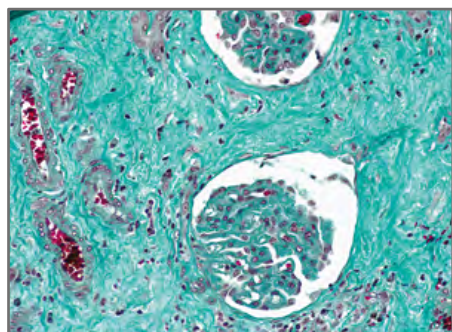
Product	Product Code	Product Sizes
Mayer Haemalum	CB320550	1000, 2500ml
Harris Haematoxylin	CB361070	500, 1000, 2500ml
Harris Haematoxylin, stabilised, mercury free	CB361075	500, 1000, 2500ml
Mayer Haematoxylin	CB361620	125, 500ml
Eosin, 1% in aqueous solution	CB312740	125, 1000, 2500ml
Eosin in alcoholic solution	CB312720	1000ml
Erythrosin 239, 1% in aqueous solution	CB361820	125, 1000ml
Phloxine B, 3% in aqueous solution	CB350750	125, 1000ml

Trichromic Staining

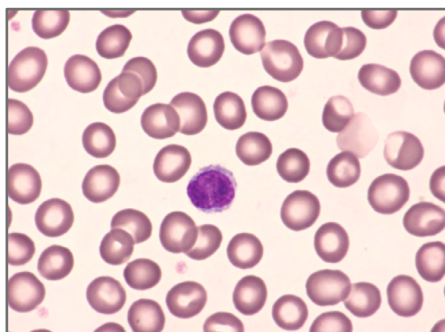
Product	Product Code	Product Sizes
Saffron in Alcoholic Solution	CB369200	250, 500, 1000ml
Saffron, pure stigma	CB317000	10g
Saffron, pure powder	CB369000	10g

Staining for Fixed and Paraffined Tissue Sections

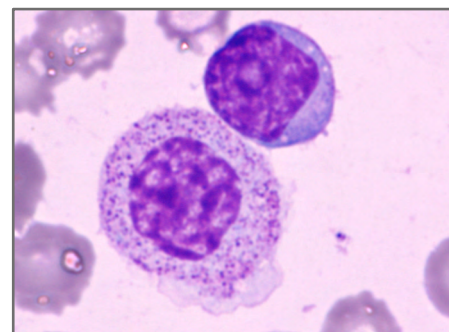
Product	Product Code	Product Sizes
Kit Trichrome de Masson, Aniline Blue Version	CB361670	1 kit (6 x 100ml) 60 slide tests
Kit Trichrome de Masson, Light Green Version	CB361350	1 kit (6 x 100ml) 60 slide tests
Kit RAL 555 - May-Grünwald Giemsa Variation	CB361550	1 kit (3 x 100ml) 100-200 slide tests
Giemsa R Solution	CB320310	125, 500, 1000, 2500ml
Giemsa L Solution	CB320300	125, 1000ml
pH 7.0 Buffer Powder	CB361600	6 doses for 6 x 1000ml



Kit Trichrome de Masson staining



Kit RAL 555 staining - CB361550

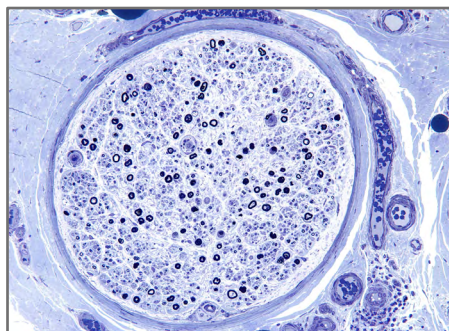


Giemsa Blast Staining



Staining for Extemporaneous Examinations

Product	Product Code	Product Sizes
Kit Extempo-RAL	CB361660	1 kit (3 x 100ml)
Extempo FIX-RAL	CB363510	1000ml (For use with Kit Extempo-RAL)
Extempo EOSINE-RAL	CB363620	1000ml (For use with Kit Extempo-RAL)
Extempo BLUE-RAL	CB363730	1000ml (For use with Kit Extempo-RAL)
Carbolic Toluidine Blue	CB320130	125, 1000ml



Carbolic Toluidine Blue - Nephron Staining

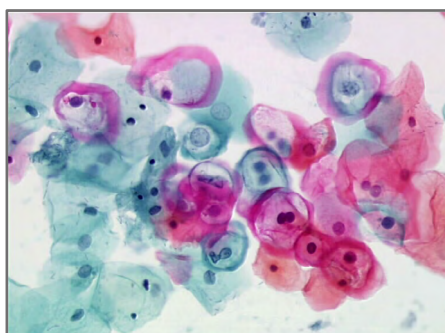
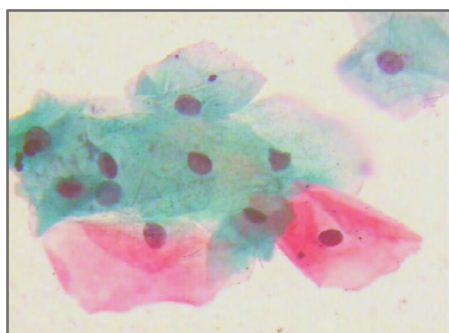




Cytology Staining

Papanicolaou Staining

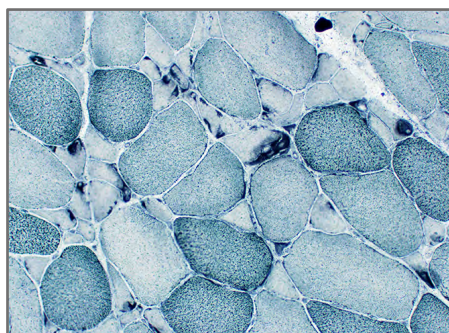
Product	Product Code	Product Sizes
Harris Haematoxylin, regressive variation	CB361070	500, 100, 2500ml
Harris Haematoxylin, stabilised, mercury free	CB361075	500, 100, 2500ml
OG6 Papanicolaou Solution	CB361630	500, 100, 2500ml
EA50 Papanicolaou Solution	CB367600	500, 100, 2500ml



Images: Papanicolaou staining

Staining for the Detection of Lipids

Product	Product Code	Product Sizes
Sudan Black Kit	CB361290	1 kit (100 slide tests)
Sudan Black in Alcoholic Solution	Included in kit	1 x 100ml
Buffer Solution	Included in kit	1 x 100ml



Sudan Black stain is insoluble in aqueous media, but soluble in lipidic and alcoholic media. In a buffered phosphatized medium, and in the presence of alcohol, sudanophilic granules hold the stain and appear dark blue, whereas the cytoplasm of the cells remains colourless.

Image: Sudan Black staining

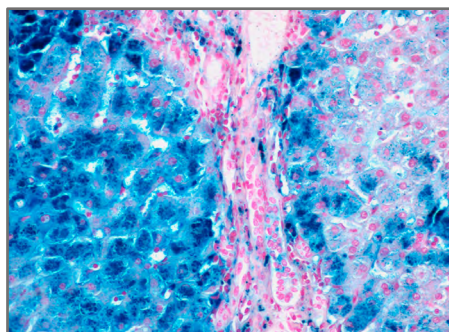
P.A.S. Staining for the Detection of Glucids

Product	Product Code	Product Sizes
Schiff Reagent	CB320680	250, 500, 1000ml
Mayer Haemalum	CB320550	1000, 2500ml



Perls Staining for the Detection of Haemosiderin

Product	Product Code	Product Sizes
Kit HistoPerls	CB361850	1 kit (50 slide tests)
Nuclear Red Solution	Included in kit	1 x 100ml
Acid Buffer and Potassium Ferrocyanide	Included in kit	10 x 5ml



In an acid environment, ferric ions react with potassium ferrocyanide which leads to a precipitate called Ferric Ferrocyanide (Prussian Blue). This highlights the presence of the pathological pigment Haemosiderin.

Image: Kit HistoPerls staining

Spermocytograms

Product	Product Code	Product Sizes
Kit SpermScan	CB361070	1 kit
Spermo FIX-RAL	Included in kit	1 x 50ml
Spermo EOSINE-RAL	Included in kit	1 x 50ml
Spermo BLUE-RAL	Included in kit	1 x 50ml
Kit Vita Eosin	CB380420-0000	2 x 100ml (Eosin & Nigrosin)
Harris Haematoxylin	CB361070	500, 1000, 2500ml
OG6 Papanicolaou Solution	CB361630	500, 1000, 2500ml
EA50 Papanicolaou Solution	CB367600	500, 1000, 2500ml

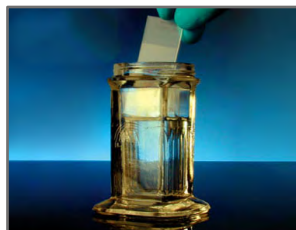
Kit SpermScan, number of tests: 50-70 slides.

Fixatives

Product	Product Code	Product Sizes
CytoRAL (Aerosol)	CB361400	75, 150ml
CytoRAL (Vaporizer)	CB361415	100ml
Water-based slide mountant (L&C)	CBSM20 / CBSM100	20ml, 100ml



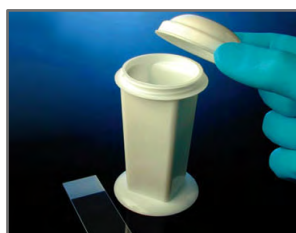
Staining Accessories



Coplin Jar, Glass

For staining slides, or for use as a developing chamber in thin layer chromatography. Unit holds five single 3" x 1" slides vertically or 10 slides back-to-back. Screw cap is white liner-less polypropylene, which reduces solvent evaporation. Rectangular base. Holds approximately 60ml. Soda-lime glass. Approximate inside dimensions: 26mm L x 26mm W x 90mm.

Product Code: CB900570



Coplin Jar, Plastic

For manual staining procedures. Jars are white plastic with a screw-on top to minimize evaporation. These jars are for use in all staining procedures, with slots on top to eliminate slide contact. Holds 5 slides in an upright position or 10 slides back to back. Spout Caps fit 38mm bottles, these spouts allow a spigot-like action for refilling smaller containers.

Product Code: CBVCJ001



Slide Staining Rack

This stainless steel staining rack is designed for use across laboratory sinks of various sizes. Triangular slide supporting rods have a tapered top, and contact the slides only in a narrow zone. This rack is simple and quickly adjustable to fit sinks up to 53.4cm (21") inside dimensions.

Product Code: CB15153821



RAL Immersion Oil

RAL Immersion Oil is a unique high quality, viscous and non-toxic Immersion Oil with a high refractive index and with no residual fluorescence. Ranging from 10 ml to 100 ml in volume and with bulk discount packs, these bottles are well suited to use with fluorescent or non-fluorescent microscopes in all fields of work.

The unique RAL dropper system is designed for one-handed use, the amount of oil necessary for one glass slide is released by a single easy press. DropSticks® in the RAL Immersion Packs are user-friendly and efficient. The RAL DropStand® rack maintains the dropper bottle ready-for-use, opened and turned upside down.

- **Non-Toxic**, No PCBs, non teratogenic, safe to handle, and conforms to H&S guidelines.
- **Refractive index of glass**: 1,513 +/-0,005 at 25°C, proven clearer, sharper images.
- **No residual fluorescence**, can be used on both light and fluorescent microscopes.
- **High Viscosity**: 1000mPa/s at 25°C, easier to handle, less mess and waste and lasts considerably longer.
- **Unique dropper system** for ease of use.
- **CE Marked**, Health and Safety assured, conforms to all IVD regulatory standards.
- **Available from stock**, next day delivery!

Immersion Oil Kit	Size	Product Code
Pack immersion 100 (Dropstick)	10 x 10ml (100ml)	CB76/340-101
Pack immersion 150	6 x 25ml (150ml)	CB76/340-150
Pack immersion 300	6 x 50ml (300ml)	CB76/340-300

All MSDS, toxicity certificates and instructions for use are available on request or on our website.

Discount available for new customers and bulk orders.



Staining Automation

Dagatron AFB 3-in-1 Multi Stainer

The Dagatron AFB Multi Stainer provides fast, easy and reliable staining for sputum specimens, using a fully automated system. The Multi-Stainer is able to perform 3 staining methods:

- Ziehl-Neelsen
- Kinyoun
- Fluorescence

The advanced heating system enables ZN hot-staining method to be used if desired. With a small footprint, easy operation and a capacity of up to 20 slides per stain this is the ideal multi-function automatic staining machine.

Product Code: CBAT-3001

AFB
Multi Stainer



Dagatron Gram/AFB Dual Stainer

The Dagatron Gram/AFB Dual Stainer provides fast, easy and reliable staining for clinical specimens, using a fully automated system. The Dual-Stainer is able to perform 2 staining methods:

- Gram & Ziehl-Neelsen (CBAT-3002) or
- Gram & Fluorescence (CBAT-3003)

The advanced heating system enables ZN hot-staining method to be used if desired. With a small footprint, easy operation and a capacity of up to 10 slides per stain this is the ideal automated dual staining machine.

Product Code: CBAT-3002 or CBAT-3003

Gram/AFB
Dual Stainer



Dagatron Gram/Haem Dual Stainer

The Dagatron Gram/Haematology Stainer provides fast, easy and reliable staining for clinical specimens, using a fully automated system. The Multi-Stainer is able to perform 2 staining methods:

- Gram
- Haematology (MGG & Wrights)

Stain and dry up to 10 slides in 11min (Gram) & 18 min (Haematology). With a small footprint, easy operation and a capacity of up to 20 slides per stain this is the ideal multi-function staining machine.

Product Code: CBAT-3004

Gram/Heam
Dual Stainer





Auto Slide Smear - Multi-Prep

The Auto Slide Smear System is a Liquid Based Cytology & Microbiology processor with patented dual membrane filters and fully optimisable for individual samples. The advanced filtration method ensures slide quality.

- 60 slides/hour processing speed
- Dual membrane filtration
- Gyn specimens, HPV & immunochemistry STD testing
- Fully customisable time, filtration and strength

Product Code: CBDAS-MP

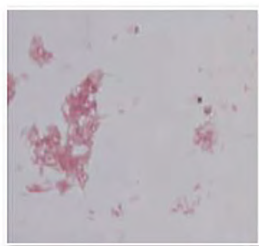


Auto Slide Smear - Multi-Prep Duo

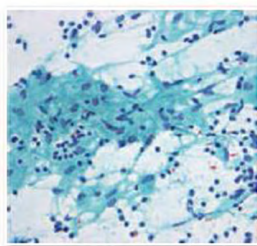
The Auto Slide Smear System is a Liquid Based Cytology & Microbiology processor with patented dual membrane filters and fully optimisable for individual samples. The advanced filtration method ensures slide quality.

- 60 slides/hour processing speed
- Advanced Dual membrane filtration
- Gyn specimens, HPV & immunochemistry STD testing
- Fully customisable time, filtration and strength

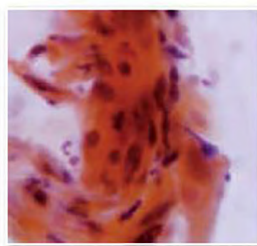
Product Code: CBDAS-MPD



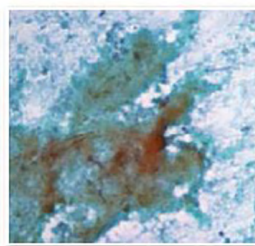
Tuberculosis



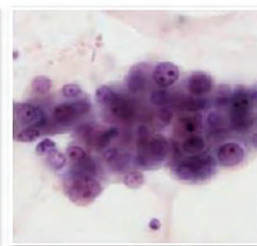
Epithelioid Cells



Squamous Cell
Carcinoma



Gaseous Necrosis



Bronchogenic
adenocarcinoma



Multi-Prep Solution

The 3rd Generation of Liquid Based Cytology Systems. Each solution is optimised for the specific specimen to ensure a clear background, easy analysis and reliable results.



TB-Sputum

- Lung Cancer, Tuberculosis, etc.
- Sputum, bronchial washing
- Clean background by eliminating mucus in simple pre-preparation



GYN

- Cervical cancer
- Uterine
- Endometrial cancer
- Clear background



Fine Needle Aspiration

- Breast cancer
- Thyroid cancer
- Clear background of cellular smear by eliminating blood & tissue fluid



Body Fluid

- Metastasis or malignant tumour recurrence
- Cerebrospinal fluid, pleural effusion, peritoneal fluid, pericardial fluid
- Superior cellular preservation by preventing protein degeneration



Urine

- Bladder cancer
- Kidney cancer
- Voided urine, bladder washing
- Minimises cytological degeneration



Automatic Slide Dryer

The Automatic Slide Dryer is designed to rapidly dry slides by blowing warm air over their surface. With four slide rack bays, you can move slides directly from stainer to dryer.

Cuts slide drying time to only 20 minutes!

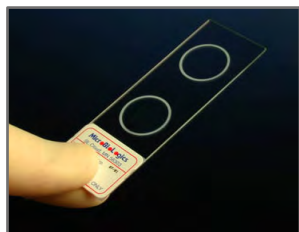
Product Code: CBSLDR1



Staining

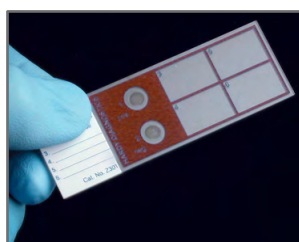
Stain Control Slides

Stain Control Slides



Staining Control Slides

Our **Staining Control Slides** are microscope slide preparations containing specific organism populations with known and predictable characteristics. These slides support formal quality assurance programs by serving as quality control challenges to verify performance of stain reagents, staining methods, and the performance of personnel interpreting microscopic examinations. This quality control slide provides two air-dried and methanol-fixed droplets within two etched circles. 10 per box. See table below for range.



Q-Slides

A convenient **ready-to-stain control slide** that will test both your stain solutions and your staining techniques. Positive and negative stain control organisms are affixed to the circles in each Q-Slide™. Up to four patient specimens (in the squares) may be processed at the same time as the QC organisms. 10 per box. See table below for range.

Control Slide	Description	Product Code
Blood Parasite	Quality control slides with 1 or 2 droplets air-dried and methanol-fixed micro-organism, of a single smear of either Babesia, Plasmodium, or Trypanosoma.	CBSL9010
Intestinal Protozoa, Zinc PVA	Each slide has a single air-dried, Zinc PVA preserved, faecal smear with representative intestinal protozoa (two or more).	CBSL1010
Intestinal Protozoa, SAF	Each slide has a single air-dried, SAF preserved, faecal smear with representative intestinal protozoa (two or more).	CBSL1510
Cryptosporidium	This quality control slide provides a single, air-dried and methanol-fixed faecal smear containing Acid Fast-Positive Cryptosporidium and Acid Fast- Negative intestinal bacteria. Slides contain an etched circle.	CBSL4510
Microsporidium	This quality control slide provides two air-dried and methanol-fixed droplets within two etched circles. The positive circle contains Microsporidium species and the negative contains a budding yeast.	CBSL8010
Pneumocystis	This quality control slide provides a single air-dried and methanol-fixed smear tissue preparation containing Pneumocystis, for the QC of microscopic detection of tissue parasites.	CBSL7010
Pneumocystis carinii	This quality control slide provides two air-dried and methanol-fixed tissue preparations for the QC of microscopic detection of tissue parasites. One smear is positive for Pneumocystis carinii, while the other is negative.	CBSL7510
Acid-Fast	The circle nearest the label contains a droplet of an Acid Fast-Positive Mycobacterium. The other contains an Acid Fast-Positive Cryptosporidium in a faecal smear sample and Acid Fast-Negative intestinal bacteria.	CBSL4010
Q-Slide AFB	For your Acid Fast Bacillus Stain QC; either Kinyoun or Ziehl Neelson. Contains <i>Mycobacterium gordonae</i> as a positive control and a <i>Corynebacterium spp.</i> as a negative control.	CBZ301
Q-Slide Gram	For your Gram Stain QC. Contains <i>E.coli</i> as a gram-negative control, and a <i>Staphylococcus aureus</i> as a gram-positive control.	CBZ302
Gram Stain	Each slide has two separate air-dried, methanol-fixed droplets of Gram-positive <i>Staphylococcus aureus</i> and Gram-negative <i>Escherichia coli</i> within two etched circles.	CBSL0110



GC Slide Control	Kwik-QC GC Stain Slide. Positive is <i>N. gonorrhoeae</i> , negative is <i>C. albicans</i> and <i>S. aureus</i> .	CBSL0410
Mycobacterium & Cryptosporidium	The circle nearest the label contains a droplet of an Acid Fast-Positive Mycobacterium. The other contains an Acid Fast-Positive Cryptosporidium in a faecal smear sample & Acid Fast-Negative intestinal bacteria.	CBSL4010
Mycology, FYC	This quality control slide provides a single air-dried and methanol-fixed preparation containing a portion of yeast or fungus culture isolate. Contains <i>Candida albicans</i> .	CBSL5010
Mycology, MYC	This quality control slide provides a single air-dried and methanol-fixed preparation containing a clinical specimen of host tissue cells and yeast or fungal elements. Contains <i>Candida albicans</i> and host cells.	CBSL6010

If you require something that is not listed, please contact us and we will be happy to assist you.





Pre-Prepared Slides

All stained sections are mounted with DPX and cover slipped. Sections are available unstained as listed below, or with a stain applied (see stain option table). All stained slides are supplied with a printed label, detailing the section and staining method applied.

We have listed only a limited (histology) section of our slides, please enquire if you require a tissue or stain that is not listed. We can provide a large variety of sections for many disciplines, including botany, bacteriology, veterinary and more.

Unstained Histology Slide	Source	Product Code
Epithelial Tissues		
Squamous Epithelium	Buccal Smear	CBUS-SE
Renal Tubules	Cuboidal Epithelium	CBUS-RT
Ciliated Epithelium	Bronchus T.S.	CBUS-CE
Pseudostratified Epithelium	Trachea T.S.	CBUS-PE
Simple Columnar Epithelium	Small Intestine T.S.	CBUS-CLE
Stratified Squamous Epithelium	Oesophagus T.S.	CBUS-SSE
Transitional Epithelium	Urinary Bladder T.S.	CBUS-TE
Connective Tissues		
Areolar Connective Tissue	Mammary Gland	CBUS-ACT
Adipose Tissue	Fatty Tissue	CBUS-AT
White Fibrous Connective Tissue	Tendon L.S.	CBUS-WFCT
Yellow Elastic Tissue	Pinna V.S.	CBUS-YET
Reticulin Fibres	Liver or Lymph Node	CBUS-RF
Hyaline Cartilage	Trachea T.S.	CBUS-HC
Circulatory System		
Artery	T.S.	CBUS-A
Vein	T.S.	CBUS-V
Aorta	T.S.	CBUS-AO
Cardiac Muscle	L.S.	CBUS-CM
Lymphatic System		
Lymph Node	T.S.	CBUS-LN
Peyer's Patches Ilium	T.S.	CBUS-PPI
Spleen	T.S.	CBUS-SP
Endocrine System		
Adrenal Gland	V.S.	CBUS-AG
Pituitary Gland	V.S.	CBUS-PG
Thyroid Gland	V.S.	CBUS-TG
Testis	T.S.	CBUS-TS
Ovary	T.S.	CBUS-OV



Connective Tissues		
Tongue	V.S.	CBUS-TNG
Salivary Gland	V.S.	CBUS-SVG
Oesophagus	T.S.	CBUS-OES
Stomach	L.S.	CBUS-STM
Duodenum	T.S.	CBUS-DUO
Ilium	T.S.	CBUS-I
Appendix	T.S.	CBUS-APX
Colon	T.S.	CBUS-CLN
Liver	T.S.	CBUS-LV
Pancreas	T.S.	CBUS-PNC
Respiratory System		
Trachea	T.S.	CBUS-TRC
Bronchus	T.S.	CBUS-BRC
Lung	T.S.	CBUS-LNG
Urogenital System		
Kidney	V.S.	CBUS-KDN
Urinary Bladder	V.S.	CBUS-UB
Fallopian Tube	T.S.	CBUS-FT
Uterus	T.S.	CBUS-UTS
Vagina	T.S.	CBUS-VG
Ovary	T.S.	CBUS-OV2
Testis	T.S.	CBUS-TS2
Prostate Gland	V.S.	CBUS-PRG
Muscular System		
Striated Muscle	L.S.	CBUS-STML
Striated Muscle	T.S.	CBUS-STMT
Non-Striated Muscle Intestinal Wall	L.S.	CBUS-NSMIW
Cardiac Muscle	Cat No: 17	CBUS-CM
Nervous System		
Cerebellum	V.S.	CBUS-CBLM
Cerebrum	V.S.	CBUS-CEM
Spinal Cord	T.S.	CBUS-SC



All unstained slides can be stained upon request, please see the staining options table overleaf for details.
A large range of sample/pre-prepared slides for other disciplines available upon request.





Staining

Histology Slides / pH Indicators

Histology Section Slide Options

The unstained slides in the previous table can be modified to order. Please see the table below for the options. If the option you require is not available, please contact us and we will do our best to accommodate you.

To order a slide with a slide option, please quote the unstained slide code with the suffix of the option that you require. For example, to order an Artery T.S. slide with the Haematoxylin & Eosin staining option, quote code CBUS-A/EH.

Slide Option	Description	Product Code Suffix
Mounted onto Superfrost Plus slide	Replaces the routine glass slide with a premium slide	/SP
Gram Stain	Highlights micro-organisms, if present	/GS
Haematoxylin & Eosin	Routine morphology staining	/EH
Alcian Blue / PAS	Stains acid & neutral mucins	/ABP
Congo Red	Stains amyloid, if present	/CR
Giemsa	Stains mast cells, for use in blood smears	/GA
Gordon & Sweet	Stains reticulin	/GST
Grocott's Methenamine Silver	Stains fungus in tissues, if present	/GMS
MSB	Stains fibrin	/MSB
Periodic Acid Schiff	Stains glycogen on basement membranes	/PAS
PAS / Diastase	Stains glycogen on basement membranes	/PD
Picro Sirius Red	Stains collagen	/PSR

pH Indicators & Reagents

A selection of our extensive range of powdered and liquid pH indicators and reagents. For our full range of products in this category, please contact us.

pH Indicator	pH Transition	Sizes	Product Code
Alizarin Red S	3.7 - 5.2	100g	CB315450
Alphanaphtholphtalein	7.4 - 8.6	5g, 25g	CB315660
Bromocresol Green	3.8 - 5.4	25g	CB317830
Bromocresol Green (sodium salt)	3.8 - 5.4	25g	CB360410
Bromocresol Purple	5.2 - 6.8	5g, 25g	CB316180
Bromochlorophenol Blue	3.2 - 4.8	5g, 25g	CB361060
Bromophenol Blue	3.0 - 4.6	25g	CB310650
Bromophenol Blue (sodium salt)	3.0 - 4.6	25g	CB360040
Bromophenol Red	4.7 - 6.3	5g, 25g	CB316590
Bromothymol Blue	6.0 - 7.6	25g	CB310680
Bromothymol Blue (0.02% aqueous solution)	6.0 - 7.6	125ml, 1000ml	CB318120
Bromothymol Blue (sodium salt)	6.0 - 7.6	125g	CB360050
Bromoxyleneol Blue	5.0 - 8.0	5g, 25g	CB310700
Chlorophenol Red	4.6 - 7.0	5g, 25g	CB316650
Cresol Red	7.2 - 8.8	5g, 25g	CB316710



Crystal Brilliant Green	0.0 - 2.6	25g, 100g	CB317800
Eosin Y	1.0 - 3.8	25g, 100g, 250g, 1000g	CB312710
Erythrosin B	0.0 - 3.5	25g, 100g	CB350150
Indigo Carmine	11.6 - 14.0	25g, 100g	CB311510
Litmus (pure soluble)	4.8 - 8.3	25g, 100g	CB317800
Metacresyl Purple	7.6 - 9.2	5g, 25g	CB316210
Metanil Yellow	1.2 - 2.8	25g, 100g	CB315490
Methyl Green	0.2 - 1.8	5g, 25g	CB317910
Methyl Orange	3.0 - 4.4	25g, 100g	CB313400
Methyl Orange (0.04% in aqueous solution)	3.0 - 4.4	1000ml	CB361790
Methyl Red	4.0 - 6.0	100g	CB361580
Methyl Red (0.02% in alcoholic solution)	4.0 - 6.0	500ml	CB361870
Methyl Red (0.02% in aqueous solution)	4.0 - 6.0	125ml	CB328300
Methyl Yellow	2.9 - 8.0	25g, 100g	CB312200
Neutral Red	6.8 - 8.0	25g, 100g	CB316800
Orange G	11.6 - 14.0	25g, 100g	CB315370
Ortocresolphthalein	8.2 - 9.8	25g	CB315690
Paranitrophenol	5.4 - 6.6	100g	CB333700
Paraxyleneol Blue	1.2 - 2.8 / 8.0 - 9.6	5g, 25g	CB360070
Phenolphthalein	8.3 - 10.0	25g, 100g	CB315700
Phenophtalein (0.05% in hydro-alcoholic solution)	8.3 - 10.0	125ml	CB320730
Phenol Red	6.6 - 8.2	25g, 1000g	CB316830
Phenol Red (sodium salt)	6.6 - 8.2	25g	CB360660
Thiazol Yellow	11.0 - 13.0	25g	CB314310
Thymol Blue	1.2 - 2.8 / 8.0 - 9.2	25g	CB311160
Thymol Blue (sodium salt)	1.2 - 2.8 / 8.0 - 9.2	25g	CB360060
Thymolphthalein	8.8 - 10.4	25g	CB315750
Resazurin	3.8 - 6.4	25g	CB316400
Rosolic Acid	6.8 - 8.2	25g, 100g	CB361570
Universal Indicator	Range: 6.8 - 8.2	125ml, 1000ml	CB318450



A Range of pH Indicators



Microscopes & Accessories

Biological Microscopes

Our Biological Microscopes are specially designed to allow the best viewing of biological samples at a range of magnifications. With high quality, metal frames and a robust build, our microscopes are built to last and give great images for many years.

We have a wide range of microscopes, including trinocular head and other additional options for all needs, and if you don't see one that fits your requirements in our selection below, or you require further information, please contact us and we will be happy to help.



BS-2000C - Monocular Biological Microscope

A monocular biological microscope. With sharp images, and a competitive price, BS2000C series microscopes are ideal instruments for students. Cost effective and specially designed for school and training use.

Specifications

- Huygens Eyepieces x5,x10,x15
- Achromatic Objective Lens x10,x40,x100
- Attachable Mechanical Stage
110×120mm/ 60×30mm
- Abbe Condenser with Iris Diaphragm and Filter
- Plan-concave mirror & optional attachable illuminator
- Blue & Green Filters





BS-2010E - Monocular Biological Microscope

A monocular biological microscope. These are comfortable and reliable, with a modern, robust design. All basic features for educational use in elementary and high schools are included.

Specifications

- Sliding Binocular Head, 45°, 360° Rotatable
- Wide Field Eyepiece WF10×/18
- Achromatic Objective Lens x4,x10,x40,x100
- Double Layers Mechanical Stage 110×120mm/ 70×20mm
- Coaxial Coarse and Fine Adjustment focus, Moving Range 10mm
- Abbe NA 1.2 with Iris Diaphragm & Blue Filter, Rack and Pinion Adjustment for Condenser
- LED Illumination, Brightness Adjustable
- Dust Cover



BS-2000C - Binocular Digital Biological Microscope

This binocular digital microscope features a built in 1.3 MP Digital Microscopy Camera and professional software offering a high resolution and user friendly operation. This combination of microscope, digital imaging system and software is easy to operate and offers outstanding performance. It can take photos, videos and perform measurement functions.

Specifications

- Binocular head, Inclined at 45°, 360° Rotatable
- Resolution: 1280×1024(1.3MP)
- Operation System: Windows & Mac
- Wide Field Eyepiece: WF10×/18
- Achromatic Objective: 4×, 10×, 40×(S), 100×(S, Oil)
- Abbe NA 1.25 Condenser with Iris Diaphragm (Φ2-Φ28mm) and frosted filter
- Coaxial Coarse and Fine Adjustment
- LED illumination, brightness adjustable
- Packed in carton, with operation manual, dust cover, AC adapter and USB cable
- Dimensions: 28cm×22cm×40cm, 5kg





Microscopes & Accessories

Biological Microscopes

BS-2030B - Binocular Biological Microscope

This binocular digital microscope with precision machined equipment and advanced alignment technology is the classical biological microscope.

Specifications

- Sliding Binocular Head 45°, 360° Rotatable
- Wide Field Eyepiece WF10×/ 18
- Quadruple Nosepiece
- Achromatic Objective 4×, 10×, 40×, 100×
- With 10x eyepiece: 40×, 100×, 400×, 1000×
- Double Layer Mechanical Stage 140×140mm/ 75×50mm
- Coaxial Coarse & Fine Adjustment, Fine Division 0.002mm, Coarse Stroke 37.7mm per Rotation, Fine Stroke 0.2mm per Rotation, Moving Range 28mm
- Abbe NA 1.25 with Iris Diaphragm & Filter
- LED Illumination, Brightness Adjustable
- Firm Aluminum Body and built in power supply 110-240V
- Dust cover, blue & green filter, immersion oil and user manual
- Dimensions: 33cm×28cm×44cm, 9 kg



BS-2035B - Binocular Biological Microscope

This is a classical biological microscope, the microscope features ingenious stand, backward nosepiece and a robust structure. Specifically designed for laboratory work.

Specifications

- Seidentopf Binocular Head, Inclined at 30°, 360° Rotatable
- Wide Field Eyepiece EW10×/ 20
- Semi-plan Achromatic Objective 4×, 10×, 40×, 100×
- Backward Quadruple Nosepiece
- Double Layer Mechanical Stage 140×140mm/ 75×50mm
- Coaxial Coarse & Fine Adjustment, Fine Division 0.002mm, Coarse Stroke 37.7mm per Rotation, Fine Stroke 0.2mm per Rotation, Moving Range 20mm
- NA 1.25 Abbe Condenser with Iris Diaphragm and Filter
- LED Illumination, Brightness Adjustable
- Dust cover, blue&green filter, immersion oil and user manual
- Dimensions: 35cm×31cm×57cm, 9.5kg





BS-2036C - Binocular Biological Microscope

This is a high level binocular biological microscope which is specially designed for college education and medical and laboratory study. Includes an Infinite optical system, robust structure, custom colour and ergonomic design.

Specifications

- Infinite Optical System
- Seidentopf Binocular Viewing Head, Inclined at 30°, 360° Rotatable, Interpupillary 50-75mm
- Wide Field Eyepiece WF10×/20
- Backward Quadruple Nosepiece
- Infinity E-Plan Objectives 4×, 10×, 40×, 100×
- Coaxial Coarse & Fine Focusing knobs, Travel Range: 26mm, Scale: 2μm
- Stage Size: 145×140mm, Cross Travel 76×52mm, Two Slide
- Abbe Condenser NA1.25 with Iris Diaphragm
- 6V/20W Halogen Lamp, Brightness Adjustable
- Blue Filter included
- Dimensions: 42cm×28cm×45cm, 8kg



BS-2040B - Binocular Biological Microscope

This is a modern precision machined binocular biological microscope, with advanced alignment technology and an infinite optical system. A modern design ideal for advanced laboratory work.

Specifications

- Infinite Optical System
- Seidentopf binocular head, 30° inclined, Interpupillary 48-75mm
- Wide Field Eyepiece WF 10×/18
- Backward Quadruple Nosepiece
- Infinity Semi-Plan Objectives 4×, 10×, 40×, 100×
- Double Layer Mechanical Stage 140mm×140mm/ 75mm×50mm
- Sliding-in Centerable Condenser NA1.25
- Coaxial Coarse & Fine Adjustment, Fine Division 0.002mm, Coarse Stroke 37.7mm per Rotation, Fine Stroke 0.2mm per Rotation, Moving Range 20mm
- 3W LED Lamp, Brightness Adjustable
- Dimensions: 35cm×35.5cm×55.5cm, 12kg





Microscopes & Accessories

Biological & Polarising Microscopes

BS-2070B - Binocular Biological Microscope

This high level binocular biological microscope is specially designed for laboratory research. It includes an infinite optical system, robust structure and ergonomic design. With an innovative safety design to increase safety and usability by eliminating scratching and catching by the user.

Specifications

- Infinite Optical System
- Seidentopf binocular head, 30° inclined, 360°, Interpupillary 48-75mm
- Wide Field Eyepiece WF 10×/20
- Backward Quadruple Nosepiece
- Infinite Plan Achromatic Objective 4×, 10×, 40×, 100×
- Rectangular 216×150mm, Cross Travel 78×54mm, Using Low-positioned X/Y Coaxial Control Knob, Two Slides
- Abbe Condenser NA1.25 with Aperture Diaphragm
- Coaxial Coarse & Fine Adjustment, Fine Division 0.002mm, Coarse Stroke 37.7mm per Rotation, Fine Stroke 0.2mm per Rotation, Moving Range 22mm
- LED illumination, Brightness Adjustable



Advanced
Safety
Design



Advanced System



Traditional

BS-5060 - Polarising Microscope

This polarising microscope is equipped with a smooth, rotating, graduated stage and a set of polarisers that allow observation of all types of transmitted light polarized specimens such as thin sections of minerals, polymers, crystals and particulates. High quality and robust construction.

Specifications

- Sliding Binocular Head at 45°, 360° Rotatable
- Eyepiece WF10×/ 18 with Scale Cross-hair
- Strain free Achromatic Objective 4×, 10×, 40×
- Quadruple Nosepiece, Centre Adjustable
- Rotatable Analyser with Gradation 0°-90°
- Bertrand Lens, Sliding in/ out of Optical Path
- Optical Compensator: λ Slip (first class red), $1/4\lambda$ Slip & Quartz Wedge
- Diameter Φ 160mm, Graduated in 1° Increments, Minimum Resolution 6' when using Vernier Scale
- Abbe Condenser with Iris Diaphragm & Filter
- 6V/ 20W Halogen Lamp, Brightness Adjustable



Polarising
Microscope



BLM-260 - Digital LCD Microscope

This Digital LCD biological microscope comes with a built in 12MP HD camera that can be directly connected to a PC, projector or TV. Images and videos can be saved directly to the microscope. Both the traditional eyepieces or the LCD screen can be used for convenient and comfortable viewing by yourself or in group work. These patented microscopes are ideal for training, teaching, laboratory and group work.

Specifications

- 9" HD LCD Screen
- Wide Field Eyepiece WF10×/ 18
- Seidentopf Binocular Head, Inclined 30°
- Infinity Semi-plan Achromatic 4×/0.10, 10×/0.25, 40×/0.65 (Spring), 100×/1.25 (Spring, Oil)
- 3.7V, 3W LED Lamp, Brightness Adjustable
- High Quality 12MP Digital Sensor (1/2.5 inch)
- Image Resolution: 2560x1920 Video: 1280x720 @ 30fps
- HDMI Connector, SD Card, Camera Software included



BLM-280 - Digital LCD Mini-PC Microscope

This LCD Digital Microscope is a new generation microscope that includes an embedded system. With a 8.4" TFT screen, it works like a computer. You can take photos, videos and measurements directly on the machine. With W-LAN and LAN function, you can directly connect the microscope to the internet to stream and send images and videos.

Specifications

- 8.4" TFT Touch Screen
- Internet enabled Windows CE System & Software
- Seidentopf binocular head, 30° inclined
- Wide Field Eyepiece EW10×/ 18
- Infinite Semi-Plan Achromatic Objective 4×, 10×, 40×, 100×
- LED Illumination, Brightness Adjustable
- 2.0 Mega Pixels CMOS Sensor
- USB2.0, AV and VGA Output, 100M Ethernet interface
- Expandable to Max 2GB Kingston SD Card
- Optional USB Computer Mouse





Microscopes & Accessories

Digital LCD Microscopes

BLM-212 - Digital LCD Biological Microscope

This digital LCD biological microscope integrates traditional optics and digital technology. A 2.0MP digital camera is built into the head of the microscope, utilising a 3.6" screen. It can capture images and videos and is easy to transport in the included travel case. Ideal for student, demonstration or portable lab work.

- 3.6" TFT LCD Screen 960x240
- 2.0MP CMOS Digital Camera 1600 x 1200
- 32MB Built in Memory
- SD Card, USB Compatible
- Image & Video Capture
- Eyepiece 45° inclined WF10x/18
- Achromatic Objective 4x, 10x, 40x
- Digital Zoom 8x
- Mechanical Stage, X-Y Moving Ruler 90x90mm
- Clean Light LED, Brightness Adjustable
- Dial Aperture 0.65 Condenser
- Working Distance 27mm
- Included portable travel case & accessories



BLM-220 - Digital LCD Biological Microscope

This digital LCD biological microscope replaces the traditional eyepiece with a High Definition 9" LCD Screen with built in camera and video technology to reduce eye strain and fatigue. This microscope can be connected to a TV, monitor or projector via HDMI or VGA and is perfect for demonstrations, training, laboratory or student use.

- 9" High Definition LCD Screen
- 12.0MP Built-in HD Digital Camera
- Video (1080P HD @ 30fps) and Photo Capture
- 4GB SD Storage included & USB Adapter
- On Screen Cross-hair/Measurement Scale/Arrows
- Achromatic Objectives 4x, 10x, 40x, 100x
- Digital Magnification 8x
- Coarse & Fine Focus
- Quadruple Nosepiece
- Double Layer Mechanical Stage
- LED Illumination
- Sliding-In Condenser NA1.25





BS-2040D - Motorised Biological Microscope

This Motorised Auto-focus Microscope integrates modern design, high precision optics and motorisation to give reliable and accurate motorized microscopy for the laboratory. Includes a high quality infinite optical system and remote control function. With a protection box, it can be used for remote diagnosis, pathological analysis for infectious or dangerous specimens.



Specifications

- Infinite Optical System
- Seidentopf Trinocular Head, Inclined at 30°, Interpupillary 48-75mm
- 3.2 Mega Pixel CMOS sensor 2048x1536
- Sensitivity: 1.0V/lux-sec (550nm)
- Extra wide field eyepiece EW10×/22, eyepiece tube Φ30mm
- Infinite Plan Achromatic Objective 4×, 10×, 20×, 40×, 100×
- Precision leading screw stage, accuracy is 1μm
- Swing out Condenser NA0.9/0.25
- Control Box, USB & Image Analysis Software
- 3W LED Lamp, Brightness Adjustable
- Dimensions: 65cm x 46cm x 44cm, 30kg



Features

- Four motor drive, for fine motorised control of X, Y and Z directions. Can be controlled either manually or via the control box and motorized system.
- Advanced digital illumination adjustment technology. Halogen lamp brightness is divided into 100 steps (0-99) for fine control.
- A 3.2 Mega-pixels camera system with USB 2.0 plug and play, and real-time preview up to 30 frames/ sec. Including advanced image analysis and recording software.
- High precision stage, quickly capture the clearest images with auto-focus. Automatic slide scanning and recognition.
- A built-in dynamic focusing system, for full laboratory microscopy automation. With network remote control system, it can be used in medical diagnosis, pathological analysis and real-time teaching etc.



BS6020D Metallurgical Motorised Microscope

A Motorised Microscope designed especially for metallurgical microscopy is also available. Ideal for in depth metallurgical examination with laboratory automation. Please contact us for more information.



Microscopes & Accessories

Inverted Microscopes

BPM-290 - Portable Inverted Biological Microscope

This Portable Inverted Biological Microscope is designed to observe liquid specimens and other filled samples. It is portable, easy to operate and provides an excellent image. Ideal for field work or student use.

Specifications

- Small, Lightweight & Portable
- Eyepiece 10x/18
- Achromatic Objectives 4x, 10x, 20x, 40x
- Triple Nosepiece
- Robust Plain Stage with Side Clips
- Bright Field LED Illumination (AA Battery x2)
- Optional Phase Contrast Observation
- Battery Powered, with low power consumption.
- Quality Objectives.



BS-2090 - Inverted Biological Microscope

This inverted microscope comes with an LWD Infinite Plan Objective to ensure a brighter, sharper field of view. Videos and images can be taken to record the sample. An ideal inverted microscope for high-end laboratory use.

Specifications

- Infinite Optical System
- Trinocular Head, Inclined at 30°
- Wide Field Eyepiece WF10×/20
- High-point, Extra Wide Field Eyepiece EW10×/ 22
- LWD (Long Working Distance) Infinite Plan Objective
- Quintuple Nosepiece
- ELWD(Extra Long Working Distance) Condenser NA 0.3, LWD 72mm (Without Condenser the WD can be 150mm)
- Plain Stage 160×250mm
- Abbe NA 1.25 with Iris Diaphragm & Filter
- 6V/30W Halogen Lamp, Brightness Adjustable
- Blue, Green and Frosted filters, Diameter 45mm,
- Dimensions: 46.5cmx39.5cmx64cm, 16kg
- Optional Teresaki, Petri Dish or Slide Holders & other attachments





BS-2092 - Inverted Biological Microscope

This inverted microscope comes with an LWD Infinite Plan Objective to ensure a brighter, sharper field of view. Videos and images can be taken to record the sample and a can be used in conjunction with a Digital Camera. An ideal inverted microscope for high-end laboratory use.

Specifications

- Infinite Optical System
- Trinocular Head, Inclined at 30°
- Wide Field Eyepiece WF10×/22mm
- High-point, Extra Wide Field Eyepiece EW10×/ 22
- LWD (Long Working Distance) Infinite Plan Objective
- Quintuple Nosepiece & DSLR port
- ELWD(Extra Long Working Distance) Condenser NA 0.3, LWD 72mm (Without Condenser the WD can be 150mm)
- Plain Stage 160×250mm
- Abbe NA 1.25 with Iris Diaphragm & Filter
- 6V/30W Halogen Lamp, Brightness Adjustable
- Optional Teresaki, Petri Dish or Slide Holders & other attachments



BLM-290 - Digital LCD Inverted Biological Microscope

This Digital LCD Inverted Biological Microscope includes a 9" HD LCD Screen for easy and comfortable viewing for yourself and to share with others. This microscope can record HD images and video, measure objects, and can be connected to a TV or projector for demonstration work. A revolutionary high-end microscope at a competitive price.

Specifications

- 9" HD LCD Screen
- Seidentopf Binocular Head, Inclined at 30°
- High-point, Extra Wide Field Eyepiece EW10×/ 22
- Wide Field Eyepiece EW10×/ 18
- Range of Infinite Plan Objectives
- Halogen Lamp 6V/ 30W
- Blue, Green and Ground Glass filters
- 12MP HD Digital Sensor (1/2.5 inch)
- Image Resolution: 2560x1920 Video: 1280x720 @ 30fps
- HDMI Connector, SD Card, Camera Software included
- Optional Teresaki, Petri Dish or Slide Holders & other attachments





Microscopes & Accessories

Fluorescent Microscopes

BS-7000B - Inverted Fluorescent Biological Microscope

This Inverted Fluorescent Biological Microscope is specifically designed for the observation of cell cultures. The Infinite Optical System gives excellent optical performance. Excellent high resolution fluorescent objectives generate high quality fluorescent images.

Specifications

- Infinite Optical System
- Seidentopf Trinocular Head, Inclined at 30°
- High-point, Extra Wide Field Eyepiece EW10×/ 22
- Quintuple Nosepiece
- Range of Infinite Plan Objectives available
- ELWD Condenser NA 0.3, LWD 72mm
- Coaxial Coarse & Fine Adjustment, Fine Division
- Plain stage 160×250 mm
- Photo Attachment for SLR Cameras
- Halogen Lamp 6V/ 30W & Range of reflected light sources
- 100W HBO Ultra Hi-voltage Spherical Mercury Lamp
- Optional Teresaki, Petri Dish or Slide Holders & other attachments



BS-2036F - Fluorescent Biological Microscope

These advanced LED fluorescence microscopes are newly developed using LED fluorescence technology. They use LEDs as the light source as the life span of the LED lamp is much longer than a mercury lamp with no warm up time or cooling needed. Safety design to eliminate catching and scratching.

Specifications

- Infinite Optical System
- Seidentopf Binocular Viewing Head, Inclined at 30°, 360°, Interpupillary 48-75mm
- Wide Field Eyepiece WF10×/20
- Backward Quadruple Nosepiece
- Infinite Plan Achromatic Objective 4×, 10×, 40×, 100×
- Coaxial Coarse & Fine Adjustment, Fine Division 0.002mm, Coarse Stroke 37.7mm per Rotation, Fine Stroke 0.2mm per Rotation, Moving Range 22mm
- Rectangular 216×150mm, Cross Travel 78×54mm, Using Low-positioned X/ Y Coaxial Control Knob, Two slides
- 6V/20W Halogen Lamp, Brightness Adjustable





BS-2036F - Fluorescent Biological Microscope

These LED fluorescence microscopes are newly developed using LED fluorescence technology. They use LEDs as the light source as the life span of the LED lamp is much longer than a mercury lamp with no warm up time or cooling needed.

Specifications

- Infinite Optical System
- Seidentopf Binocular Viewing Head, Inclined at 30°, 360° Rotatable, Interpupillary 50-75mm
- Wide Field Eyepiece WF10×/20
- Backward Quadruple Nosepiece
- Infinity E-Plan Objective 4×, 10×, 40×, 100×
- Coaxial Coarse & Fine Focusing knobs, Travel Range: 26mm, Scale: 2μm
- Stage Size: 145×140mm, Cross Travel 76×52mm, Two Slide
- Abbe Condenser NA1.25 with Iris Diaphragm
- Abbe NA 1.25 with Iris Diaphragm & Filter
- 6V/20W Halogen Lamp, Brightness Adjustable
- 3W LED Blue & Green excitation Light Source



BS-2040F - Fluorescent Biological Microscope

These advanced LED fluorescence microscopes are newly developed using LED fluorescence technology. They use LEDs as the light source as the life span of the LED lamp is much longer than a mercury lamp with no warm up time or cooling needed. Advanced modern design.

Specifications

- Infinite Optical System
- Seidentopf Binocular Viewing Head, Inclined at 30°, Interpupillary 48-75mm
- Wide Field Eyepiece WF10×/18
- Backward Quadruple Nosepiece
- Infinity Semi-Plan Objective 4×, 10×, 40×, 100×
- Coaxial Coarse & Fine Adjustment, Fine Division 0.002mm, Coarse Stroke 37.7mm per Rotation, Fine Stroke 0.2mm per Rotation, Moving Range 20mm
- Double Layers Mechanical Stage 140×140/ 75×50 mm
- 6V/20W Halogen Lamp, Brightness Adjustable
- 3W LED Blue & Green excitation Light Source





Microscopes & Accessories

Fluorescent Microscopes

BS-7000A - Upright Fluorescent Biological Microscope

This upright fluorescence microscope uses ultraviolet light as the light source, objects which are radiated then fluoresce, and then the shape of an object and its location can be observed under the microscope. High quality and robust construction.

Specifications

- Infinite Optical System
- Seidentopf Trinocular Head, Inclined at 30°
- Wide Field Eyepiece WF10×/22
- Backward Quintuple Nosepiece
- Infinite Plan Achromatic Objective 4×, 10×, 20×, 40×, 100×
- Swing Condenser NA 0.9/ 0.25
- Coaxial Coarse & Fine Adjustment, Fine Division 0.001mm
- Double Layers Mechanical Stage 185×142/ 75×55 mm
- External Illumination, Aspherical Collector, Halogen Lamp6V/ 30W
- Range of reflected light sources
- 100W HBO Ultra Hi-voltage Spherical Mercury Lamp



CB400180 - Module Fluo-RAL, Fluorescent LED Illuminator

Module Fluo-RAL is a powerful and economical upgrade to your traditional Mercury or Xenon lamps. Thanks to its high-performance LED, it improves contrast and reliability, and is ready to use straight away with no warm up time required.

Unlike a traditional mercury vapour or xenon lamp, an LED emits a quasi-monochromatic spectrum, of higher intensity at the reference wavelength.

The fluorescence intensity is therefore higher giving better contrast from the background of the preparation and easier and more reliable reading with less eye strain.

With adaptors to fit any existing fluorescent microscope, this module is an excellent upgrade for any laboratory involved in modern fluorescent work.





BS-3060F - Fluorescent Zoom Stereo Microscope

This fluorescent stereo microscope allows viewing of samples with fluorescence at a range of magnifications, from 2.4x - 480x. With a range of sophisticated accessories this microscope allows you to view and photograph specimens from macro or micro views.



Specifications

- Infinite Parallel Zoom Optical System
- Binocular Head, 20°Inclination
- Eyepiece EW10×/Φ22 (more available)
- Working Distance 115mm
- Fluorescent attachment GFP-B(EX460-500,DM505,BA510-560) (more available)
- 0.8×-5×, 0.8×-6.4× or 0.8×-8× Zoom Objectives available
- Wide range of objectives available
- Transmission & Reflection LED Illumination, Brightness Adjustable & 100W Ultra hi-voltage spherical mercury lamp, power supplier with digital display



BS-3040 - Stereo Microscope

This stereo or dissecting microscope offers upright, non-reversed 3D images with a high resolution and quality. Optional eyepieces and objectives expand the magnification range and working distances. An ideal standard stereo microscope for academic, medical and industrial use.

Specifications

- Inclined Binocular Viewing Head, Un-rotatable
- Trinocular Head, Inclined at 30°
- Wide Field Eyepiece WF10× (more available)
- High-point, Extra Wide Field Eyepiece EW10×/ 22
- 2×, 4× Objective (more available)
- 57mm Working Distance
- Transmitted light 6V/12W & Incident light 6V/12W





Microscopes & Accessories

Stereo Microscopes

BS-3040 - Zoom Stereo Microscope

This stereo or dissecting microscope offers upright, non-reversed 3D images with a high resolution and quality. Optional eyepieces and objectives expand the magnification range and working distances. An ideal high quality standard stereo microscope for academic, medical and industrial use.

Specifications

- Extra wide field eyepiece EW10×/22
- Binocular Viewing Head, Inclined at 45° or 60° (digital and trinocular heads available)
- Zoom Objective 0.8×-5×, Zoom Ratio 6.3:1
- Working Distance 115mm
- Incident Illumination 100V-240V/ LED & Transmitted Illumination 100V-240V/ LED
- Glass Insert Plate, Diameter 100mm
- Dimensions: 36.5cmx31cmx52cm, 8.5kg



BLM-340 - Digital LCD Zoom Stereo Microscope

This Digital LCD Stereo Microscope has reworked the traditional way of microscopic observation with modern digital imaging. Our Stereo LCD Microscopes can be used with the 9" HD LCD Screen for easy and comfortable viewing for yourself and to share with others. Can be connected to a PC, projector or TV. Ideal for group work.

Specifications

- 9" HD TFT Screen, 1280x800
- Seidentopf Binocular Head, Inclined at 30°
- High-point, Extra Wide Field Eyepiece EW10×/ 22
- Magnification 9x-80x, Digital 8x
- Four-zone LED Ring Lighting Control
- Cross-hair and arrow software pointers
- 5 MP Digital Sensor (1/2.5 inch) 2560 x 1920
- Image Resolution: 2560x1920
- HDMI Connector, SD Card, Camera Software included



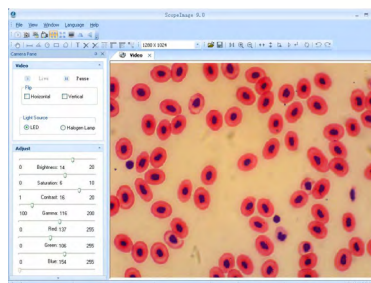


BUC2-320C - 3.2MP Digital Microscope Eyepiece Camera

This Digital Microscope Eyepiece Camera fits records photo, video and time lapse views from in HD from the eyepiece slot of any microscope. It includes built in lens, adaptors, user friendly analysis software and all cables.

Specifications

- 3 MP HD CMOS Image Sensor (4:3)
- Large max image size (2048×1536)
- Electronic Rolling Shutter
- High sensitivity >0.44V/lux-sec
- 65dB dynamic range
- Image output: USB 2.0, Directshow and Twain
- Scope Image 9.0 Software (Windows & Mac)
- USB and Power cables included.
- Ideal for training or group work.



BUC2-500C/900C - Digital Microscope Eyepiece Camera

This Digital Microscope Eyepiece Camera fits records photo, video and time lapse views from in HD from the eyepiece slot of any microscope. It includes built in lens, adaptors, user friendly analysis software and all cables.

Specifications

- 5.0 MP or 9.0 MP HD CMOS Image Sensor (4:3)
- Huge max image size (3488 x 2616)
- Electronic Rolling Shutter
- High sensitivity >0.44V/lux-sec
- 65dB dynamic range
- Image output: USB 2.0, Directshow and Twain
- Scope Image 9.0 Software (Windows & Mac)
- USB and Power cables included.
- Ideal for training or group work.





Microscopes & Accessories

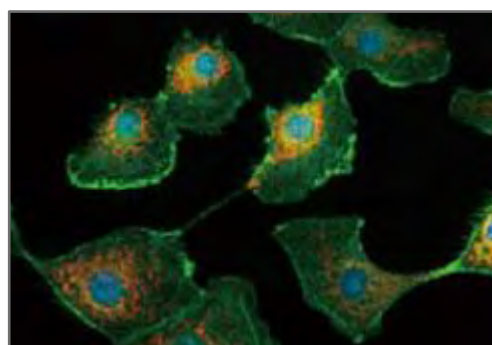
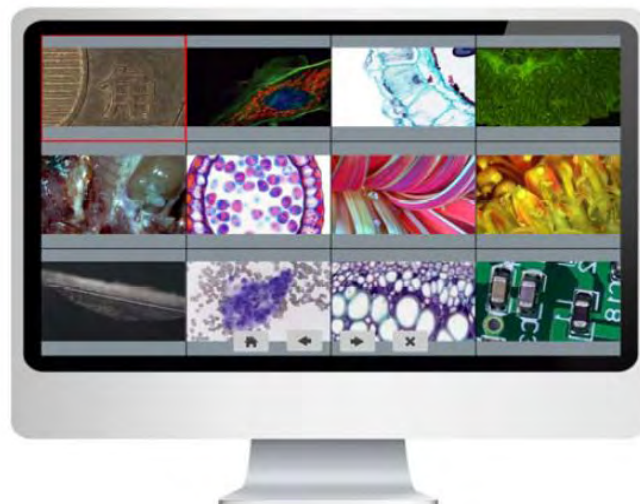
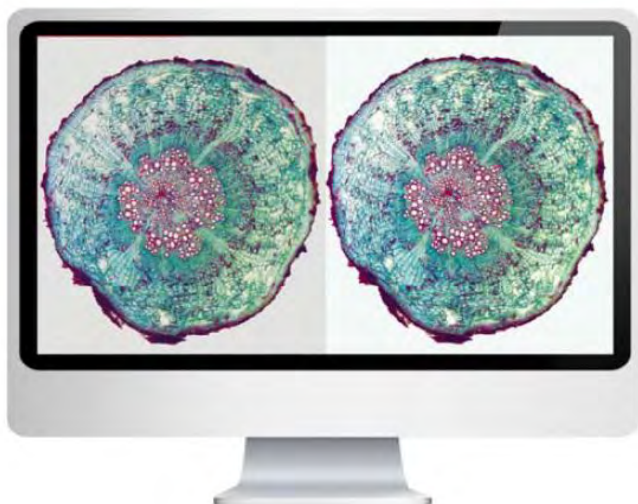
HD Digital Eyepiece Cameras

BHC3-1080P - HD Digital Microscope Eyepiece Camera

BHC3-1080P HDMI Microscope Camera is a 1080P scientific grade digital camera that has top range colour reproduction and super fast frame speed. BHC3-1080P can be connected to a LCD monitor or HD TV via HDMI cable and operated independently without connecting to a PC. The image/video capture and operation can be controlled by mouse, to eliminate shaking. It can also be connected to a PC via USB. With fast frame speed and short responding time features, this is an ideal high precision addition to any microscope.

Specifications

- Top Quality CMOS Sony IMX236 HD Sensor
- Tiny Pixel Size allows great HQ images (2.8x2.8μm)
- 1920 x 1080 HD Video Resolution @ 60fps
- High Speed SD Card Capture
- Advanced ISCapture Software





BLC-350 - Digital Microscope Camera Screen

BLC-350 HD tablet camera is a brand new, high performance and cost-effective, 9.7" HD smart microscope tablet digital camera. Utilising the Android operating system, it runs smoothly and with an easy to use interface. With professional, dedicated, built-in software, including multi-functional measurement and particle analysis, this is a versatile and highly useful addition to any microscope.



Specifications

- CMOS Sony IMX236 HD Sensor
- Tiny Pixel Size for great images (2.8x2.8µm)
- 1920 x 1080 HD Video Resolution @ 60fps
- High Speed SD Card Capture
- Advanced ISCapture Software

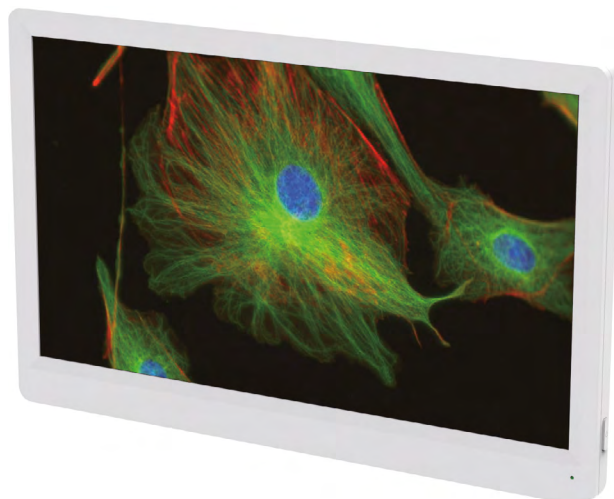
BLC-600 - 3.2MP Digital Microscope Eyepiece Screen

This large, super-high quality 11.6" retina HD LCD screen comes with a 6.0MP HD Digital camera for 1080P HD video recording and image capture. It can be connected to a PC, TV or projector to measure, analyse and present the microscope view. Excellent image quality, with an easy to use system that will fit your existing microscopes. Ideal for many situations, including demonstration, teaching, professional recording and high end laboratory work.



Specifications

- Super-High Quality 11.6" HD Retina Display
- CMOS Sony IMX236 HD Sensor
- 1920 x 1080 HD Video Resolution @ 60fps
- High Speed SD Card Capture
- Electronic rolling Shutter
- Standard C Mount Attachment
- Direct Mouse Control
- Advanced ISCapture Software
- Windows & Mac Compatible
- Best Quality Professional Recording





Microscope Accessories & Attachments

A large range of microscope attachments and accessories are available, from light sources to objectives, making it easy to replace damaged parts or upgrade your microscope. If there is something you require that is not listed, please contact us.

Product	Description	Product Code
Light Sources		
Cold Light Illumination Source	An auxiliary lighting device to improve observation results. Single, Double & Ring light guides and Kohler attachment available.	CBBSL-150A
LED Light Illumination Source	An LED auxiliary lighting device for better observation results. Single, Double & Ring Fibres available.	CBBSL-5A
Fluorescent Ring Light	Ideal for stereo microscope illumination, these 8 or 10W fluorescent lights provide bright and even illumination.	CBBAL-2
LED Ring Light	Ideal for stereo microscope illumination, these 54 or 48 piece LED lights provide bright and even illumination.	CB2240HD
Large LED Ring Light	Used for inspection and imaging illumination on stereo microscopes. Features fine control box and 72 LEDs.	CB2440HD
Microscope Stands & Stages		
Range of stands available	Robust stands in a range of sizes and designs. Please contact us for more details.	CBBSZ-(F1-F18)
X-Y Stage	180x155x26mm. Range: x-75mm y-55m, accuracy 0.1mm	CBBMS-302
Measuring Stage	160x123x21mm. Range: x-75mm y-55m, accuracy 0.1mm	CBBMS-311
Polarisation Stage	A rotatable polarisation stage	CBPOLSTG
Temperature Controlled Stage	A stage for keeping samples at a determined temperature. Includes control box.	CBTEMPSTG
Plain Stage Base with attachable Stage	A plain stage base with a selection of stage attachments	-
Double Layer Mechanical Stages	A range of double layer mechanical stages	-
Double Layer Mechanical Stages with Dual Slide Finger	A range of double layer mechanical stages with dual slides finger	-
Eyepieces		
Hygens Eyepieces	A range of Hygens eyepieces	-
Plan Eyepieces	A range of plan eyepieces	-
Wide Field Eyepieces	A range of wide field eyepieces	-
Wide Field with Diopter Eyepiece	A range of wide field eyepieces with diopter attachment	-
Centering Telescopes	A range of centering telescopes	-



Viewing Heads		
Monocular Viewing Heads	A range of monocular viewing heads	-
Binocular Viewing Heads	A range of binocular viewing heads	-
Trinocular Viewing Heads	A range of trinocular viewing heads	-
Condensers		
Bright Field (Insert)	A range of bright field insert condensers	-
Bright Field (Invaginate)	A range of bright field invaginate condensers	-
Phase Contrast (Insert)	A range of phase contrast insert condensers	-
Phase Contrast (Invaginate)	A range of phase contrast invaginate condensers	-
Dark Field (Insert)	A range of dark field insert condensers	-
Dark Field (Invaginate)	A range of dark field invaginate condensers	-
Fluorescent Attachments		
RAL LED Fluorescent Module	LED replacement for traditional Mercury or Xenon lamps. Improves intensity, contrast and lifespan. No warm up times.	CB4000-180
Inverted Fluorescent Attachment	Traditional fluorescence attachment for inverted microscopes. Includes adaptors and control box.	-
Upright Fluorescent Attachment	Traditional fluorescence attachment for upright microscopes. Includes adaptors and control box.	-
Other Attachments		
Polarisation Set	A simple easy to use polarisation set for microscopy	-
Drawing Attachment	The drawing attachment allows the user to create high quality line sketchings of microscopic specimens.	-
Collectors	A range of collectors to fit your microscope	-
Kohler Illumination Sets	A range of Kohler illumination sets	-
Video Adaptors with C Mount	A range of video adaptors with C mount	-
Nosepieces for Objectives	A range of nosepiece objectives from 3 slots to 5 slot	-
Teresaki Holders	Teresaki holders for inverted microscopes	-
Petri Dish Holders	Petri dish holders for inverted microscopes	-

If you require something that is not listed, please contact us and we will be happy to assist you.
See overleaf for microscope objectives.



Microscope Objectives

A large range of microscope objectives are available for a variety of uses. If you have any specific requirements, please contact us and we will be happy to assist you.

Objective	Type	Function	Magnifications Available
Finite Objectives	Achromatic	Standard	1x, 4x, 10x, 20x, 40x, 60x,
		Fluorescent	4x, 10x, 40x, 100x
		Phase Contrast	10x, 20x, 40x, 100x
		Polarising	4x, 10x, 25x, 40x
		Oil Immersion	100x
	Semi-Plan Achromatic	Standard	2x, 4x, 10x, 20x, 40x, 60x
		Oil Immersion	100x
	Plan Achromatic	Standard	4x, 5x, 10x, 20x, 40x, 60x
		Phase Contrast	10x, 20x, 40x, 100x
		Polarising	4x, 10x, 25x, 40x, 63x
		Oil Immersion	50x, 100x
Infinite Objectives (f=180)	Semi-Plan Achromatic	Standard	4x, 10x, 40x
		Oil Immersion	100x
	Plan Achromatic	Standard	2x, 4x, 5x, 10x, 20x, 40x, 60x
		Fluorescent	4x, 10x, 20x, 40x, 100x
		Phase Contrast	10x, 20, 40x, 100x
		Oil Immersion	50x, 100x
	Inverted	Standard	4x, 10x, 20x, 40x
		Fluorescent	4x, 10x, 20x, 40x, 100x
Infinite (f=150)	Semi-Plan Achromatic	Standard	4x, 10x, 20x, 25x, 40x, 60x
		Phase Contrast	10x, 40x, 100x
		Oil Immersion	100x
Infinite (f=200)	Plan Achromatic	Standard	4x, 10x, 20x, 40x, 60x
		Phase Contrast	10x, 40x, 100x
		Oil Immersion	100x





Microscope Maintenance & Cleaning

Microscopes are precise optical instruments and it's very important to carry out routine maintenance and cleaning to ensure reliable operation. Regular maintenance can extend the lifespan of the microscope and ensure that viewing results are accurate and reliable.

Cleaning

- Keeping optical elements clean is important to ensure good performance and a clear image. To ensure dust or particles do not interfere with viewing, the microscope should be covered by the dust cover when not in use.
- If there is dust or dirt on the surface of the microscope, use a light blower or soft brush to gently remove the debris. This should be done before using lens cleaning fluid or a cloth/lens paper to ensure the debris does not scratch the lens.
- To clean the objectives, non-linting lens paper moistened with a few drops of lens cleaning fluid should be used. Clean gently from the centre of the lens towards the edge in a circular motion to reduce watermarks. Avoid excessive use of the cleaning fluid to reduce liquid penetration. We recommend our Hardy Diagnostics Lens Cleaning Solution and our Lint-Free Lens Paper, pictured right.
- After using oil immersion objectives, make sure to clean the lens surface by wiping gently with lint-free lens paper and a few drops of lens cleaning solution.
- If the body of the microscope is stained, use a non-linting cloth with ethanol or slightly soapy water to clean. Do not use organic solvents or allow excess liquid to enter moving parts.
- Keep the working environment clean and dry. If the environment is excessively humid, the possibility of mildew growth is increased and so a dehumidifier is recommended. If mildew is found on optical elements, please contact us immediately for a professional



Lens Cleaning Solution 30ml
Product Code: CBZ79



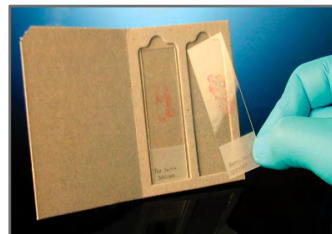
Non-Linting Lens Paper
Product Code: CB52846001/01

Maintenance & Use

- Adjust the light to the lowest setting before turning off the microscope and allow to cool before replacing the dust cover.
- If the microscope is in frequent use, the light can be dimmed to it's lowest setting between uses, without the need to repeatedly turn the microscope on and off.
- To move the microscope, remove all cables and hold the stand arm with one and firmly support the base with the other. Take care when lifting as microscopes can be heavy. Avoid tilting or tipping the microscope upside down.
- Microscopes should be placed on a solid level bench or work surface, away from edges or from where people may accidentally knock the device.
- Avoid removing the eyepieces, objectives and condensers in order to limit dust entering the device.
- Corrosive and volatile chemicals such as iodine, acids, bases etc. are harmful to elements of the microscope. If contaminated, the microscope should be cleaned immediately to prevent damage.
- Always ensure the objective lenses are cleaned after use and all immersion oil is removed using a suitable lens cleaner and non-linting lens paper.



Microscopy Consumables & Other Products



Product	Description	Product Code
Cover Glass		
Economy Cover Glass 18x18mm	Quality low price borosilicate cover glass. Thickness 0.13-0.17mm. 100 per box. Available in pack of 10 or individually.	CBECG100
Cover Glass 18x18mm	High quality borosilicate. Non-fogging. 28g box.	CB1818HD
Cover Glass 22x22mm	High quality borosilicate. Non-fogging. 28g box.	CB2222HD
Cover Glass 22x40mm	High quality borosilicate. Non-fogging. 28g box.	CB2240HD
Cover Glass 24x40mm	High quality borosilicate. Non-fogging. 28g box.	CB2440HD
Cover Glass 24x50mm	High quality borosilicate. Non-fogging. 28g box.	CB2450HD
Microscope Slides		
ProSlide™ Microscope Slides (Frosted, Economy)	High quality slides with a frosted end, one side. Great for everyday laboratory use. 3"x1"x1mm 72 per box	CBPF72E
ProSlide™ Microscope Slides (Frosted, Premium)	Super high quality polished slides with bevelled edges, frosted end, one side. Ideal for haematology use. 3"x1"x1mm 72 per box	CBPF72P
ProSlide™ Microscope Slides (Plain, Economy)	High quality slides, plain and clear. Great for everyday laboratory use. 3"x1"x1mm 72 per box	CBPP72E
ProSlide™ Microscope Slides (Plain, Premium)	Super high quality polished slides with bevelled edges, plain and clear. Ideal for haematology use. 3"x1"x1mm 72 per box	CBPP72P
Economy Microscope Slides	Clear glass ground edges. Quality low price slides. 50 slides per box. 25.4x76.2x1.1mm	CBEMS50
Slide Fixatives & Mountants		
Cytoseal Slide Mounting Medium	Clear and colourless mounting solution, dries quickly. Indefinite preservation of samples. Ideal for use with immersion oil. 110ml.	CB83114
CytoRAL Fixative (aerosol)	Fixative for cytological smears used for cervical smears, urines, sputa and broncho-alveolar fluids. 75/150ml	CB361400/75/150
CytoRAL Fixative (spray)	Fixative for cytological smears used for cervical smears, urines, sputa and broncho-alveolar fluids. 100ml	CB361415/100
L&C Water Based Slide Mountant	A useful water based microscope slide mountant based on Lubkin & Carsten's formula. 20ml	CBSM20



Microscope Cleaning		
Bibulous Blotting Paper	High quality, highly absorbent blotting paper with minimum linting or shedding. 50 sheet booklet.	CB28511007/01
Lens-Paper, Non-linting	High quality, non-linting lens paper for cleaning lenses, glasses, goggles and more. No scratching and dust free. 50 sheet booklet.	CB52846001/01
Lens Cleaner	An effective lens cleaning solution in dropper bottle and case. Safe to use on most delicate optics. Use with lens paper. 30ml	CBZ79
Byocor Anti-Microbial Wipes	Using Byotrol™ biocide to kill organisms including MRSA, E. Coli, & C. Difficile. Each wipe protects 4m ² for days. 10 sheet pack.	CBBAMW10
Immersion Oil		
Non-Toxic Immersion Oil 5ml	High quality, viscous and non-toxic Immersion Oil with a high refractive index and with no residual fluorescence 5ml	CBIO5
Non-Toxic Immersion Oil dropper & dropstand 10ml	High quality, viscous and non-toxic Immersion Oil with a high refractive index and with no residual fluorescence 10ml dropper	CBIO10D
Non-Toxic Immersion Oil 100 pack	High quality, viscous and non-toxic Immersion Oil with a high refractive index and with no residual fluorescence 10x10ml dropper	CB76/340-101
Non-Toxic Immersion Oil 150 pack	High quality, viscous and non-toxic Immersion Oil with a high refractive index and with no residual fluorescence 6x25ml	CB76/340-150
Non-Toxic Immersion Oil 300 pack	High quality, viscous and non-toxic Immersion Oil with a high refractive index and with no residual fluorescence 6x50ml	CB76/340-300
Slide Storage		
Slide Mailer, Small	Sturdy cardboard slide mailers for transport. 360° hinged cover, recessed flaps. Holds 20 slides/box.	CB513025
Slide Mailer, Cardboard (1 slide)	Solid cardboard, holds slides for transport, with or without cover glass. Thumb grooves and cut corner identifiers. Holds 2000/box	CBMSL01
Slide Mailer, Cardboard (2 slide)	Solid cardboard, holds slides for transport, with or without cover glass. Thumb grooves and cut corner identifiers. Holds 1000/box	CBMSL02
Slide Mailer, Polypropylene	Hinged lid mailer for safe storage and transport of slides. Holds 5 slides. (100 per box)	CB80094376
SlideFile™ Jr. Slide Holder Storage Box	Convenient, organised storage container for microscope slides. Stackable, transparent, with removable tray. Holds up to 200 slides.	CBM70050W
Slide Storage Box, Large	Large, convenient slide storage box. 48 compartments. Dimensions: 9.5" x 6"	CB73010
Other Products		
Sterile Swabs	Individually wrapped sterile swabs.	CBSWAB15
Petri Dishes	Transparent high grade Petri dishes.	CBPETRI20
Slide Racks	A range of slide racks to suit your needs. Custom sizes available. Please contact us for more information and ordering.	-
Microscope Kits	We sell a range of microscope accessory kits, complete with slides, cover-slips, stains, mountant, and much more, in a range of sizes for all needs.	-
Calibration Slides	We offer a range of calibration slides for all uses. Please contact us for more details.	-

Tel: +44 (0)1530 272 738 **Email:** info@cosmosbiomedical.com **Web:** www.cosmosbiomedical.com



Ref: CBCatMS-0001

Cosmos Biomedical Ltd.

Tel/Fax: +44 (0)1530 272 738
Mobile: +44 (0)7970 907 977

Email: info@cosmosbiomedical.com
Web: www.cosmosbiomedical.com

Address: Cosmos Biomedical Ltd.
Jasmine House, 2 Coronation Lane,
Oakthorpe, Swadlincote, Derbyshire
DE12 7QY, United Kingdom